

The Access Management Pipeline with **ARIA**



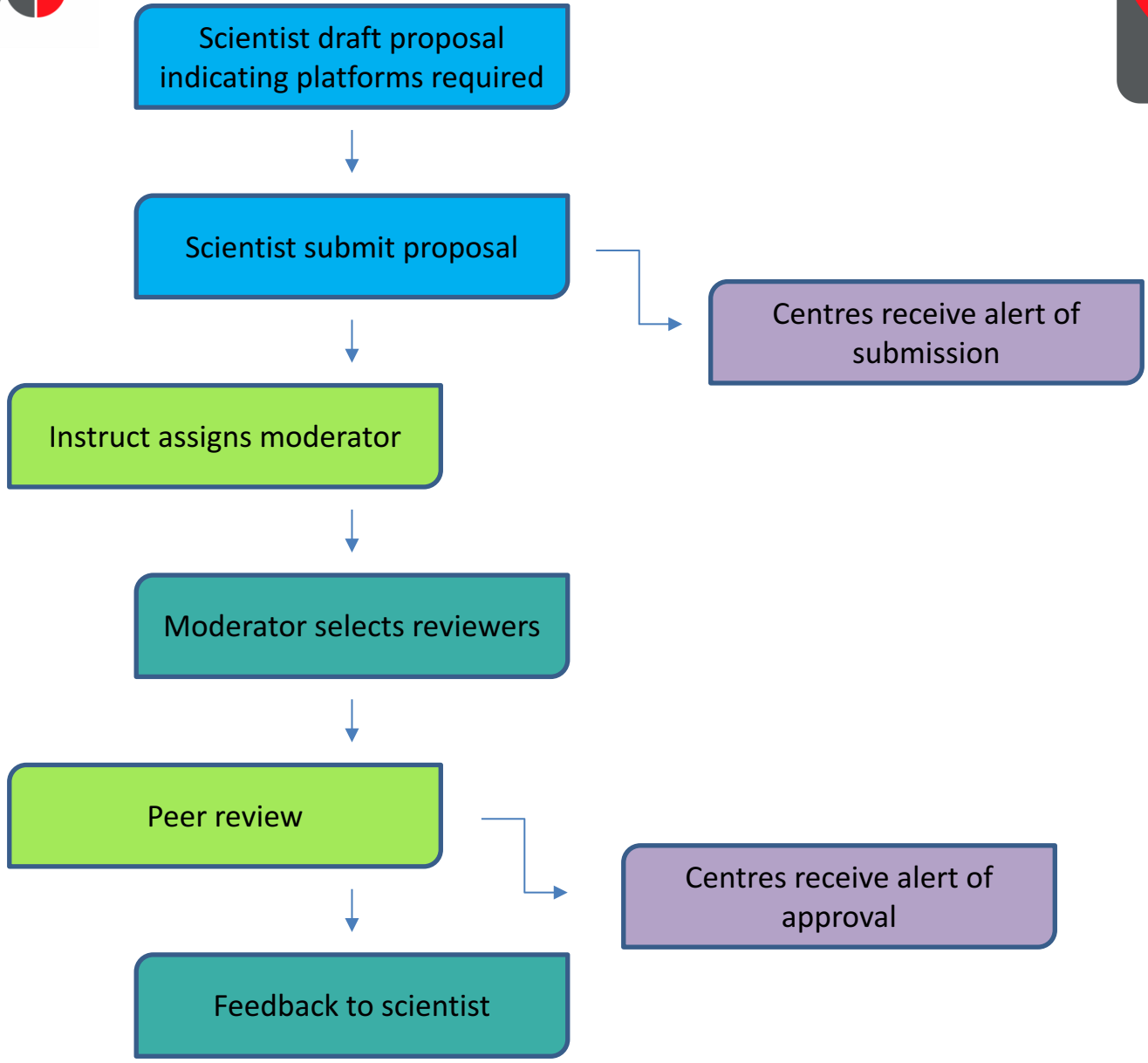
**Providing access to state of the art structural
biology infrastructure for researchers**

Fiona Sanderson and Claudia Alén Amaro
February 2018



Managing Access to Research Infrastructures

- Thousand of external (International) users
- **ARIA** allows for:
 - Proposal submission
 - Peer review
 - Visit scheduling
 - Reporting
 - Feedback





Catalogue: Multi-access platforms

- X-ray imaging beamlines
- Solid State NMR
- Solution NMR
- X-ray crystallography beamline
- X-ray imaging beamlines

Please select your preferred platform from the list below. Reviewers may highlight platforms which will cater to your specific needs after your proposal has been accepted.

<p>EM - eBIC - Diamond Light Source</p> <p>Choose your route:</p> <p>Other/Collaboration (No Funding Sought)</p>	<p>Cryo-EM NeCEN Titan Krios 1 - NeCEN - LU</p> <p>Choose your route:</p> <p>Other/Collaboration (No Funding Sought)</p>	<p>Titan Krios 1, University of Leeds - Astbury Centre</p> <p>Choose your route:</p> <p>Other/Collaboration (No Funding Sought)</p>	<p>Titan Uni - As</p> <p>Choose your route:</p> <p>Other/Collaboration (No Funding Sought)</p>
--	--	---	--

Visit Detail:



Build your proposal

The system allows you to pick your team including your PI.

Connect your application to your CV in the form of your profile

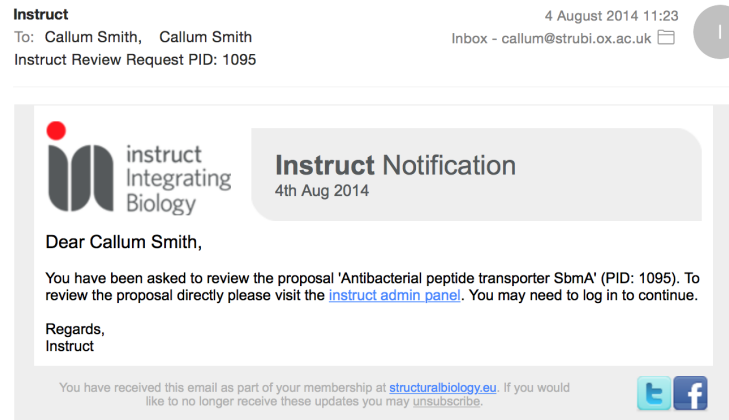
Decide the number and order of visits

The proposal fields are adaptable to the different funding routes

Submit



The system includes an in-built messaging system and alerts being sent automatically to users, moderators, reviewers, facility managers and administrators



With Instruct the facilities get a message as soon as the proposal is submitted, they can indicate availability even before the proposal is approved





Peer review

A moderator is selected (manually or automatically) and reviewers assigned.

Messages are sent to reviewers alerting them to the action required

Reminders are sent if reviews are late

Upon decision facilities and applicants received a message with the decision and links to the moderator and reviewers comments



Scientist Contact the facility



Facility schedule visit



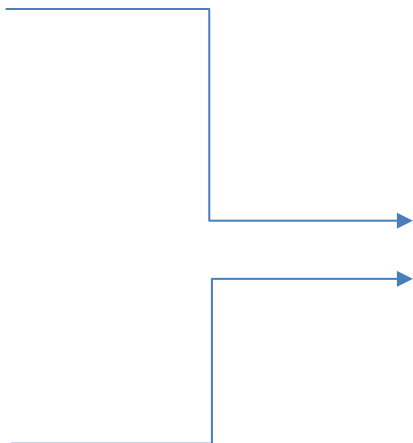
Scientist visit facility or send sample



Facility ticks visit as completed indicates number of units



Instruct will assist if required



Facility review visit

Scientist review visit



Facility invoices Instruct

Scientist invoices Instruct





Visit scheduling

After a proposal is approved facilities are expected to contact the applicant to schedule the visit

The hub facilitates the scheduling if necessary

If a facility is unavailable, a substitute facility is suggested

Once the visit is complete facilities and applicants are expected to review the visit including the inclusion of the unit of access used



What Instruct pays for:

Instruct funding for Access to each service/technology (at the academic rate) is **capped at €1500 per visit.**

Consumable costs (€1100 per access visit or project, which will comprise a specified number of access units to achieve an agreed experimental outcome).

Travel and accommodation up to €400 within mainland Europe and €600 for Israel (eligible accommodation costs are capped at €80pppn).

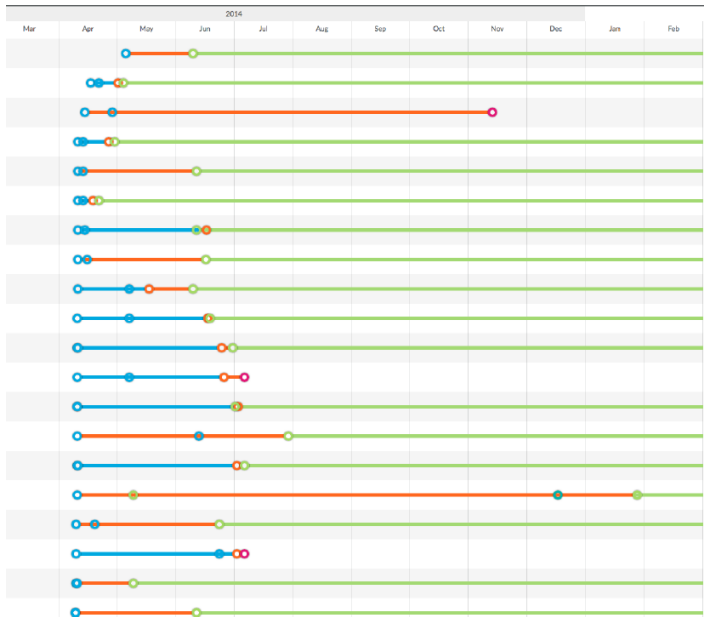
Instruct accepts some flexibility in the costs claimed per access (for example, where travel costs can be covered by other means or no travel is required, the total amount of Instruct support funds (€1500) may be claimed against consumable costs, with justification). In the case of exceptionally expensive platforms (as described in their unit cost) Instruct support may be extended to €3000.



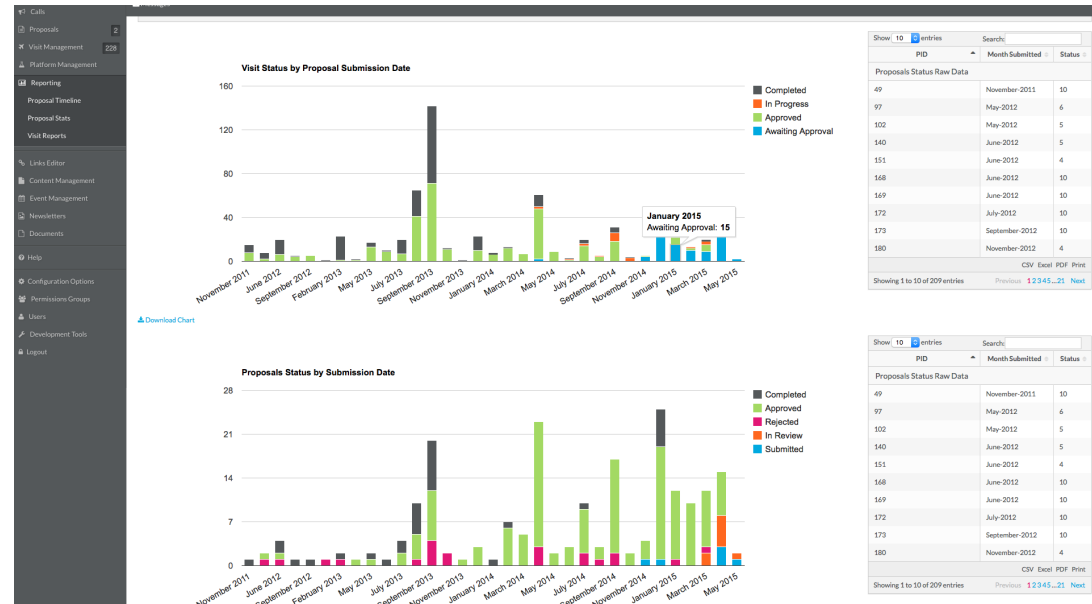
Reporting & Metrics



Proposal timeline overview



Filterable reports generated from proposal data



Join Instruct at www.structuralbiology.eu

Follow us on twitter @instructhub

