



Instruct-ERIC makes high-end structural biology technologies and methods accessible to European researchers.





Key Technologies

X ray
spectroscopy

NMR

Electron
microscopy

Protein
production &
crystallization

Mass
Spectrometry

Nanobody
discovery



Our Services



Research visits



Training Programme



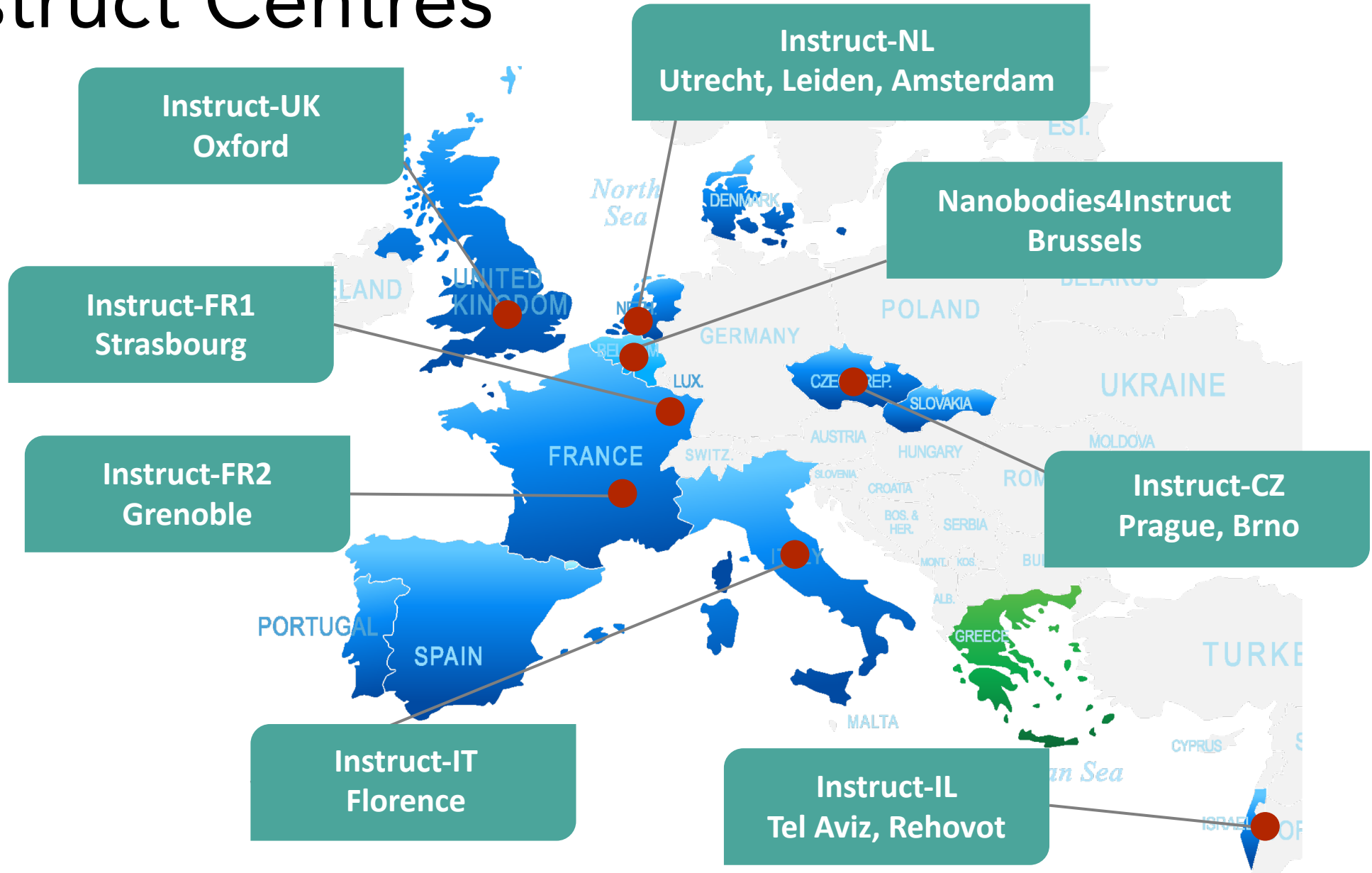
Internships



R&D funding



Instruct Centres





How to apply

www.structuralbiology.eu



10

COUNTRIES



8

CENTRES



19

SITES



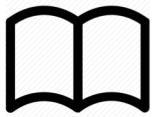
428

SERVICES



6601

USERS



738

PUBLICATIONS





Instruct-ERIC

Instruct-ULTRA


Access Call



EUROPEAN RESEARCH INFRASTRUCTURE CONSORTIUM

Instruct-ERIC

Instruct-ERIC **formally ratified**
by the European Commission
and was celebrated at the Royal
Society, London 18th July 2017

Starting Points: [Service/Technology Catalogue](#) [Training & Events](#) [Jobs](#) [Instruct Centres](#) [Contact Us](#) 

Latest News

FINANCE AND ADMINISTRATIVE OFFICER Job

Instruct-ERIC hub has an open position for a finance and administrative officer. Deadline applications is 1st August 2018. More information on the post ...


INSTRUCT- FRISBI course on preparation and characterization of macromolecular complexes

Upcoming Events

10th Jul 2018

Training

CORBEL webinar: The BBMRI-ERIC ELSI Helpdesk-
Personalising ELSI Support

📍 braunschweig 

16th Aug 2018

Conference

[Submit a Proposal](#)

[Contact Us](#)

[Book Instrument](#)

[Instruct
Publications](#)

A photograph of the Alcala de Henares, Madrid, featuring a large, ornate, light-colored stone building with a central arched entrance and a balcony. The building is surrounded by green trees and a foreground of red flowers. The text is overlaid in white with a thin black outline.

**Instruct Biennial Structural
Biology Scientific Conference**

Alcala de Henares, Madrid

22-24 May 2019

Registration Open



A four year booster project to enhance the services of Instruct-ERIC, and widen access to new audiences and countries.

www.instruct-ultra.eu